



PhoneLabs™

America's Telephone Company

Dock-N-Talk™

USER'S GUIDE



"Forming a New World of Communication."™

UNIVERSAL DOCKING STATION USER'S GUIDE

Introduction	3
Installation	5
Line Pair Switch	6
Extension Telephone Sets	7
Docking the Cell Phone Using a Cable Connector	9
Docking the Cell Phone Using the Bluetooth Module	10
LED Status	11
Solid GREEN	11
Flashing GREEN	11
Solid RED	11
Keys	11
Setup Ringing "🔔" Key	11
Bluetooth Pairing Key	12
Extension Telephones	13
Placing a Call	13
Receiving a Call	13
Caller ID*	13
Call Waiting Calls	14
Voice Dial Access*	14
Voice Mail Access*	14
One Digit Dialing*	15
Live Call Transfer*	15
Handset Charging	16
Paging/Intercom	16
Glossary	17
Troubleshooting	18
Warranty Information	20
Safety and Regulatory	21

UNIVERSAL DOCKING STATION USER'S GUIDE

INTRODUCTION

Congratulations on your purchase of the Dock-N-Talk universal cell phone docking station and charger. The Dock-N-Talk enables the user to make and receive cell phone calls using normal home or office corded or cordless telephones. The Dock-N-Talk uses patent pending technology to provide true land line (wireline) type service from a wireless cell phone service. Depending on the features supported by the particular cell phone connected to the Dock-N-Talk, most all wireline services can be supported.

Phone Labs supplies the following components with every Dock-N-Talk purchase:

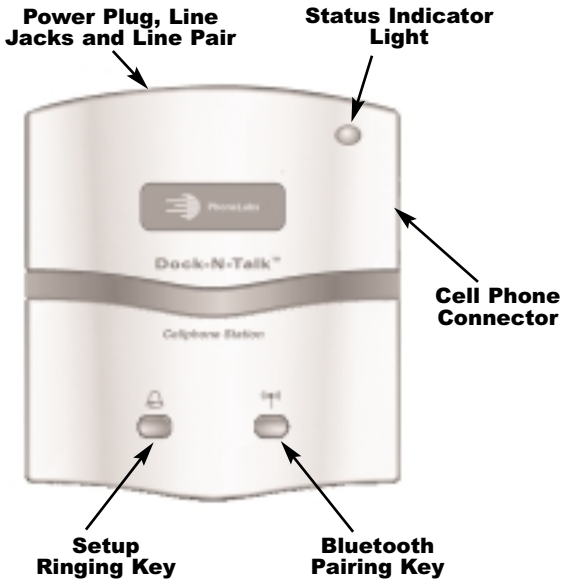
- Dock-N-Talk Unit
- 9-Volt Power Supply
- Short and Long Modular Telephone Line Cord
- Quick Start Card and Warranty Mailer
- User's guide.

Please be sure to verify that all these items are present in your package. In addition, make sure you have purchased a Phone Labs cell phone cable connector or Bluetooth Module to connect your cell phone to the Dock-N-Talk.

The Dock-N-Talk will bring a whole new dimension to speaking on your wireless service, yet with the familiar comfort of wireline telephones. Just Dock and Talk!

UNIVERSAL DOCKING STATION USER'S GUIDE

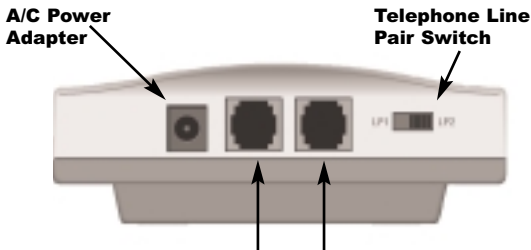
INTRODUCTION



UNIVERSAL DOCKING STATION USER'S GUIDE

INSTALLATION

Make the basic connections to Dock-N-Talk as shown below.



To Extension Sets or House Wiring

1. Connect the supplied A/C power adapter cord into the Dock-N-Talk round adapter plug shown above. Then connect the large transformer end into a normal 120-volt power outlet.
2. Connect a telephone line cord to one of the two modular connectors. The middle two connectors accept telephone cords connecting to extension telephone set(s) and/or to a modular wall jack.
3. Connect the other end of the line cord into a telephone or a wall connector (if you want other telephone sets to ring). One connector of the Dock-N-Talk can be connected to a telephone set while the second connector can be connected to a wall jack.



UNIVERSAL DOCKING STATION USER'S GUIDE

Line Pair Switch

Once the power adapter is connected, the LED will illuminate indicating the Dock-N-Talk is connected to power. In the back of the unit on the right, there is a slide switch for selecting a Dock-N-Talk connection to either Line Pair 1 ("LP1") or Line Pair 2 ("LP2").

1. If only a local extension telephone set is to be connected, set this switch to LP1. Verify that the LED is now flashing green. Press the ringing "🔔" button to verify the telephone set rings properly.
2. If you have no wireline telephone service, set this switch initially to LP1. Check that the LED is flashing green. If the LED is red, this indicates that the wireline telephone service is still present. Set the switch to LP2 or disconnect the local telephone service from the network interface box. Verify that the LED is now flashing green.
3. If you have wireline telephone service, set this switch initially to LP2. Check that the LED is flashing green. If the LED is red, this indicates that the wireline telephone service is still present. Disconnect the second wireline telephone line from the network interface box. Verify that the LED is now flashing green.
4. If the unit is to be connected to the internal wiring in a home, you may choose to have your Dock-N-Talk connected to either LP1 or LP2. If the switch is set to LP1, the Dock-N-Talk is connected to the first pair of wires, which would generally be used for a single wireline telephone connection in the home. If the home has no wireline telephone service, the LED should be flashing green.



UNIVERSAL DOCKING STATION USER'S GUIDE

If the LED is solid red, LP1 is already in use by wireline telephone service. Either disconnect the wireline telephone service at the network interface box or move the line switch on back of unit to LP2. If the LED is now flashing green, any telephones to be used must be connected to the second pair of wires in the home.

5. If the LED is red when the switch is positioned at LP2, then wireline service is also connected to this pair of wires. Disconnect the wireline telephone service at the network interface box to use this pair of wires.


***Note:** A wireline telephone connection to the local telephone company central office may be present even if no wireline telephone service is being purchased. If the LED is red, this indicates that a wireline is still present, whether or not dial tone is present. The LED must be flashing green in order for the Dock-N-Talk to work prior to the connection of your cell phone. Only connect the cell phone handset to the Dock-N-Talk if the LED is flashing green and note which setting, LP1 or LP2, has been set. The telephones must be connected to the same set of wires as the Dock-N-Talk setting in order to be able to dial out on the telephones and have them ring for incoming calls. See LED Status section above.

Extension Telephone Sets

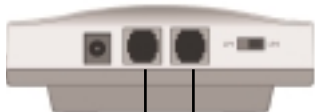
You may have up to five extension telephones connected through your internal wiring to the same pair of wires connected to the Dock-N-Talk. This will allow you to place cell phone calls and receive cell phone calls from those extension telephones. The extension telephones can be connected using your existing telephone wiring as if you had local wireline telephone service.

UNIVERSAL DOCKING STATION USER'S GUIDE

If you have local wireline telephone service, do not use these same pair of wires to connect the Dock-N-Talk to the extension telephones.

Use the supplied long line cord to connect to a RJ-11 modular wall jack for local extension telephones by plugging one end of the line cord into the wall modular connector and connect the other end into the back of the Dock-N-Talk. The Dock-N-Talk RJ-11 modular jacks are in parallel and it does not matter which one is used for a local telephone or for the modular wall jack. Press the ringing "" button to verify the telephone sets connected ring properly.

Do NOT connect a standard telephone line on the same line and pair as Dock-N-Talk



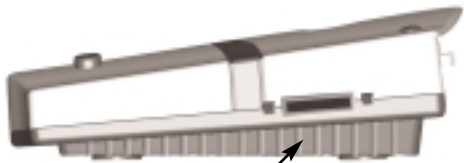
Plug telephone line cord into one or both of Dock-N-Talk's modular telephone jacks



UNIVERSAL DOCKING STATION USER'S GUIDE

Docking the Cell Phone Using a Cable Connector

To connect your cell phone to the Dock-N-Talk, you will need the proper cable for your cell phone. Verify that the cable will connect to your model of cell phone by connecting the larger end of the cable to your cell phone. Be sure that your cell phone is turned on. Then connect the small end of the cable to the connector on the right side of the Dock-N-Talk. When you plug your cell phone into the Dock-N-Talk using the correct cable for your cell phone model, you will see the LED turn from flashing green to solid green color. That will confirm that the proper connection has been made.



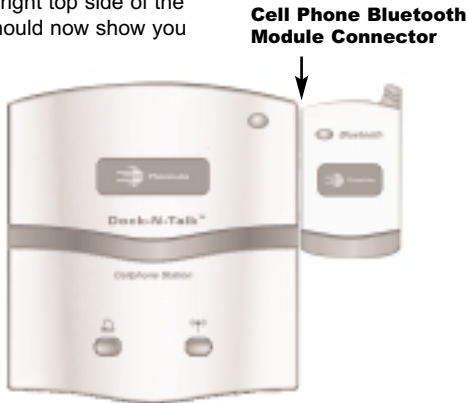
**Cell Phone Cable
and Bluetooth
Module Connector**



UNIVERSAL DOCKING STATION USER'S GUIDE

Docking the Cell Phone Using the Bluetooth Module

If your cell phone is bluetooth enabled, you may connect to the Dock-N-Talk using a Phone Labs Bluetooth Module. To connect your cell phone using the Bluetooth Module, you will need to turn on the bluetooth feature on your cell phone. Be sure that your cell phone is turned on. Then connect the Bluetooth Module to the connector on the right side of the Dock-N-Talk. Press the Bluetooth Pairing button on the right top side of the Dock-N-Talk. Your cell phone should now show you the Dock-N-Talk and ask you if you want to connect. Your cell phone may also require you to enter a password. Once the wireless bluetooth connection has been made, you will see the LED turn from flashing green to solid green color on the Dock-N-Talk and the blue LED on the Bluetooth Module should be illuminated. Confirm that the proper connection has been made.



UNIVERSAL DOCKING STATION USER'S GUIDE

LED STATUS

Solid GREEN

Indicates Dock-N-Talk is properly connected to the cell phone (via cable or Bluetooth Module).

Flashing GREEN

Indicates Dock-N-Talk Adjunct is powered and ready to connect but is not yet properly connected to cell phone or is connected to an unrecognized cell phone.

Solid RED

Indicates one or both scenarios:

- (1) Dock-N-Talk is plugged into a telephone line that is already in use by a wireline telephone service. Disconnect the wireline telephone service before plugging into Dock-N-Talk or move the line switch on back of unit to the other setting.
- (2) Power source to the Dock-N-Talk is insufficient. Ensure that only the supplied Phone Labs power adapter is being used and is properly plugged into both the Dock-N-Talk and the electrical outlet.

KEYS

Setup Ringing "🔔" Key

The Setup Ringing key is used to test the Dock-N-Talk connection to extension telephone sets. Pressing this key will ring any extension sets connected to the Dock-N-Talk. The function of the Ringing key does not require connection to cell phone. The following describes the two different test modes:

UNIVERSAL DOCKING STATION USER'S GUIDE

- (1) Short Ring: pressing down the key for less than one second will cause a short ring burst to extension sets.
- (2) Long Ring: press and hold down the key for at least one second then releasing it will provide two long rings to the extensions sets. The long ring is useful to confirm which telephones are connected to the Dock-N-Talk. The software version information is sent via Caller ID to extension telephones between rings if there is no cell phone connected to the Dock-N-Talk.

Bluetooth Pairing Key

Bluetooth devices must be paired before they can communicate. Normally, pairing needs to only be performed once. By pressing the Bluetooth Pairing key for at least two seconds, the Dock-N-Talk will enter into a search mode where it is expecting to receive communication from a bluetooth enabled cellular handset. After the Dock-N-Talk Bluetooth pairing key is pressed, the green LED starts to flash rapidly indicating it is in SEARCH Mode. The user must then initiate bluetooth pairing from the cell phone. The cell phone will prompt the user to enter a password or pass key. **The default password is 3774.** Once the Dock-N-Talk and cell phone establish a Bluetooth connection, the LED turns solid green to indicate connection to the cell phone. Bluetooth operation requires the Phone Labs Bluetooth Module for functionality. The Bluetooth Module has a similar function to the cable and plugs into the same connector slot on the Dock-N-Talk.

UNIVERSAL DOCKING STATION USER'S GUIDE

EXTENSION TELEPHONES

Placing a Call

To place a call on an extension phone, pick up your handset and dial your telephone number normally. You may also dial a "#" at the end of the dialed number to make a faster connection. The "#" tells the Dock-N-Talk that the dialing action is finished and functions similarly to the Send button on your cell phone. The "#" can also be programmed in the extension telephone set's memory dialing keys. If there is an error tone (rapid series of beeps), this is an indication that there is no cell phone plugged into the Dock-N-Talk or that the Dock-N-Talk is in use on another call.

Receiving a Call

When your cell phone rings, all of the extension telephone sets that are connected to the Dock-N-Talk (either through modular wall jacks or by direct connection) will also ring. Simply answer the call as you would an ordinary wireline call by picking up the handset or activating the speakerphone or headset.

Caller ID*

If your extension telephone set is Caller ID-capable and you receive Caller ID on your cell phone, the Caller ID name and number may be able to be displayed on your extension telephone set. The Caller ID name may not appear on the extension set, depending on your cell phone's capability. The Caller ID may not be available from some models of cell phones, even if it shows up on the cell phone display. In this case Caller ID capable extension telephone sets will display "Dock-N-Talk" as the Caller ID name, and no number will be displayed.

UNIVERSAL DOCKING STATION USER'S GUIDE

***Note:** This feature works only with certain models of cellular handsets that support Caller ID and make it available to accessories.

Call Waiting Calls

When you hear the call waiting beep, you can use the FLASH (or LINK, CALL WAITING, etc.) button on your extension telephone set to connect to the second caller. Pressing the FLASH button on your extension telephone set may toggle between the two callers if supported by your cell phone.

Voice Dial Access*

Go off hook and hold down "#" key, for at least one second, using the handset or speaker phone of any extension set. Say the name of any voice dial tags that are programmed into your cell phone. The call will be connected.

***Note:** This feature works only with cellular handsets that support voice dialing and make it available to accessories.

Voice Mail Access*

Go off hook and hold down the "1" key, for at least one second, using the handset or speakerphone of any extension set. You will be connected to your voice mail service. Follow the voice instructions as you normally would when accessing your voice mail from your wireless handset. Some cell phones require that the Voicemail number be programmed into the first phonebook location for this feature to work remotely. If this feature is not supported on your cell phone, enter your voicemail access number as a speed dial on your extension telephone set. Dialing your own cell phone number from your cell phone is often the Voicemail access number.

UNIVERSAL DOCKING STATION USER'S GUIDE

***Note:** This feature works only with cellular handsets that support voice mail access. However, going off hook and holding down the "1" key for at least one second will turn off the message light on your extension telephone set.

One Digit Dialing*

Go off hook and hold down the "2" through "9" keys, for at least one second, using the handset or speakerphone of any extension set. You will be connected to your one key speed dials of your cell phone.

***Note:** This feature works only with certain models of cellular handsets that make speed dial keys available to accessories.

Live Call Transfer*

If you are on a call with your cell phone, you can transfer the call to the Dock-N-Talk. Connect the cell phone to the Dock-N-Talk during the call and you can continue the call on an extension set. Depending on the cell phone model, a user may need to press "# #" on the extension set to properly route the cell phone call to that extension. You may also detach your cell phone from the Dock-N-Talk during a call and continue the call on your cell phone if your cell phone supports that feature.

***Note:** This feature works only with certain models of cellular handsets that make speed dial keys available to accessories.

UNIVERSAL DOCKING STATION USER'S GUIDE

HANDSET CHARGING

While your cell phone is connected by a cable to the Dock-N-Talk, your cell phone should be charging. You may see the charging indication displayed on the screen of your cell phone. However, if your battery is completely dead or extremely low on power, the charging feature may not be able to be activated. Charge your battery with the manufacturer supplied cord for at least 15 minutes before docking your cell phone.*

***Note:** The Dock-N-Talk's universal charger will not be able to power your phone with dead batteries or if no battery is installed.

PAGING/INTERCOM

The Dock-N-Talk is able to page all corded or cordless extension telephone sets connected to it. Before going off-hook on your extension telephone handset, press the "🔔" ringing button for 2 seconds. Wait until the ringing has stopped and go off-hook on extension telephone set and begin speaking to the person who has answered from another telephone extension set.

UNIVERSAL DOCKING STATION USER'S GUIDE

GLOSSARY

Cell Phone

Used generically to refer to any wireless mobile handset that may be operating on different networks. Also called wireless phones.

Extension Telephone Set

Any analog corded or cordless telephone set that is plugged into the Dock-N-Talk base unit or through house wiring connected to the RJ-11 modular jack.

Local Extension Set

Any analog telephone set that is plugged directly into the RJ-11 jack on the back of the Dock-N-Talk base unit.

SIM Card

Subscriber Information Module, a removable card that enables users to store personal information such as phone numbers and SMS messages. This card may be transferred from one cell phone to another. Used with GSM network cell phones.

Wireline Service

Telephone service is provided by wires coming from the central office of a local telephone company. Also called land line service.

Wireless Service

Telephone service provided by cell phone service providers or carriers.

UNIVERSAL DOCKING STATION USER'S GUIDE

TROUBLESHOOTING

LED is red

Your Dock-N-Talk is plugged into a telephone line that is connected to a wireline service. If you have wireline service, move the switch on the back of the Dock-N-Talk to LP2. If you have no wireline service, disconnect the wireline connection to your home before plugging into Dock-N-Talk. This may require disconnecting the wireline at your network interface module.

If the LED is still RED, power to the Dock-N-Talk is insufficient. Ensure the power adapter is properly plugged into the wall and into the Dock-N-Talk and you are using the Phone Labs power adapter supplied with the product.

LED is flashing green

Check that you have the cable or Bluetooth Module securely connected. Check that the cell phone you are connecting is supported by the Dock-N-Talk Adjunct. Check that you are using the proper cable for the cell phone to which you are connecting.

No dial tone on extension telephone sets

Check to see that the extension set is plugged into the same pair of wires that the Dock-N-Talk is plugged into. Press the Setup Ringing "🔔" key and see if the phone rings. If it does not ring, check that you have the correct wires connected to the extension telephone set. If it does ring, ensure that the Dock-N-Talk is not plugged into the public telephone network.

UNIVERSAL DOCKING STATION USER'S GUIDE

Error/busy tone on extension sets

Check to see that there is a cell phone plugged into the Dock-N-Talk. Make sure the green LED is a solid green color. If it is not, reconnect your cell phone. If it is a solid green color, check to see that the Dock-N-Talk is not on a call.

Voice Dial not working

Some cell phones do not support this feature or require the dial pad cover to be flipped open for voice dial to be activated.

Voice Mail access not working

Some cell phones do not support this feature. Program your cell phone Voicemail access number into a speed dial on your extension telephone set. The Voicemail access number is often your own cell phone number.

Voice Mail access dials another number

Some cell phones require the Voicemail number to be programmed into the first phonebook location. Put the Voicemail access number in the first phonebook location. The number is often your own cell phone number.

Caller ID on extension sets always shows "Dock-N-Talk"

Your cell phone must have Caller ID functionality and must also allow accessories to access it. Some cell phones will display Caller ID on the screen but still not allow accessories to be sent the information.

UNIVERSAL DOCKING STATION USER'S GUIDE

WARRANTY INFORMATION

Phone Labs warrants to the original purchaser of the Dock-N-Talk that under normal operating conditions this product will be free from defects in material and workmanship for a period of 12 months from the original date of purchase.

Phone Labs' sole obligation under this warranty or under any other legal obligation is to repair or replace, at its option, the product if it is deemed defective by Phone Labs during the warranty period. This will be done free of charge with new or refurbished product or parts, at Phone Labs option, when the product is returned to Phone Labs, freight or postage prepaid with the **original sales receipt** during the warranty period. This warranty does not apply if the product has been otherwise misused, abused, accidentally damaged, or damaged or malfunctions or fails to function as a result of an act of God such as fire, flood or lightning (or other incidence of excessive or insufficient voltage) or failure to follow instructions.

In no event shall Phone Labs be liable for incidental or consequential damages.

This warranty gives you specific legal rights and you may have other rights which vary from state to state. Some states do not allow limitations on how long an implied warranty lasts or the exclusion or limitation of incidental or consequential damages, so the above limitations may not apply to you. No Phone Labs dealer nor any other person or entity other than Phone Labs may extend or modify this warranty and no such modification or extension shall be effective unless it is in writing.

UNIVERSAL DOCKING STATION USER'S GUIDE

SAFETY AND REGULATORY

When using the Dock-N-Talk, follow these safety precautions to reduce the risk of electric shock and personal injury:

1. Read and understand all instructions.
2. Unplug the unit from the wall outlets before cleaning. Do not use liquid cleaners or aerosol cleaners. Use a damp cloth for cleaning.
3. Do not use this unit near water (example: a bathtub).
4. Do not place near or over a radiator or heat register.
5. Do not overload wall outlets and extension cords as this can result in the risk of fire or electric shock.
6. Use only the power source supplied with the unit.
7. Do not disassemble this unit; take it to a qualified serviceman when service or repair is required. Opening or removing covers may expose you to dangerous voltages or other risks.
8. Do not use to report a gas leak in the vicinity of this unit.
9. Unplug this product from the wall outlet and refer servicing to qualified service personnel under the following conditions:
 - a. When the power supply cord or plug is damaged or frayed.
 - b. If the product has been exposed to rain, water or liquid has been spilled on the product, disconnect the unit and allow it to dry out. Once dry, it may be tested too see if it still operates; however, do not open up the product.
 - c. If the product housing has been damaged.
 - d. If the product exhibits a distinct change in performance.



10. Avoid using the product during an electrical storm. There may be a remote risk of electric shock from lightning.

FCC notices

This unit has been tested and found to comply with the limits for a Class x digital device as specified in Part 15 of FCC rules. These limits provide reasonable protection against radio and TV interference in a residential area. However, your equipment might cause TV or radio interference even when operating properly.

To eliminate interference, try one or more of the following corrective measures:

- Relocate or reorient the TV or radio.
- To the extent possible, increase the distance between the equipment and the TV or radio.
- Use outlets on different electrical circuits for the equipment and the TV or radio.

Changes or modifications not expressly approved by the party responsible for compliance could void the user's authority to operate the equipment.



PhoneLabs™

America's Telephone Company

Phone Labs Technology Company Inc.

955 Connecticut Avenue

Bridgeport, CT 06607

www.phonelabs.com

“Forming a New World of Communication.”SM