

SET-UP



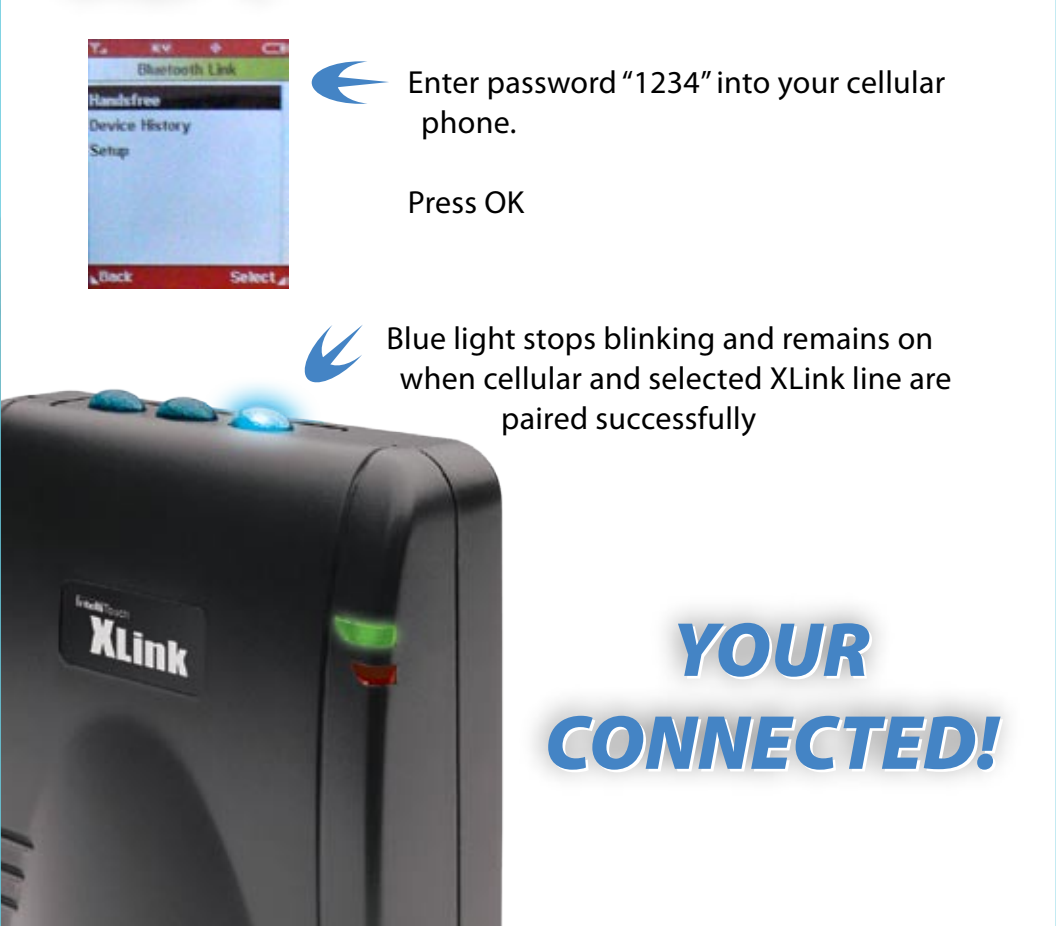
STEP 1 Plug-in & Connect



STEP 2 Ready for Pairing



STEP 3 Pair Cellular Phone to XLink



**YOUR
CONNECTED!**

Connect support stand to XLink

Plug telephone cord from main home telephone into XLink

Plug power adapter from wall outlet into XLink

Select line [●], [●●], or [●●●] on XLink

Press and hold down button for selected line until blue button light blinks quickly

Enable your Blue Tooth function on your cellular phone (refer to your cellular phone's manual if necessary) *steps may differ per model*

Typical Pairing

- Select "Hands Free"
- Select "Look For Devices"
- Select "XLink Gateway"
- Select "Yes" and pair with XLink
- Enter password "1234"
- Press "OK"

Enter password "1234" into your cellular phone.

Press OK

Blue light stops blinking and remains on when cellular and selected XLink line are paired successfully

IntelliTouch
XLink
ITC-BT

For customer service contact
your point of sale or visit:
www.intellitouch.com

Made in China
Copyright © IntelliTouch
XLink is a registered
Trademark of IntelliTouch.
All rights reserved.

IntelliTouch
San Diego CA, 92121

OUTLETS



NOTES

- Bluetooth enabled cellular phone required
- XLink can be placed upright with stand or lay flat
- Pair up to 3 cellular phones to your XLink
Each line [•], [••], or [•••] pairs to one cellular phone
- Once paired, your cellular phone and your XLink will automatically connect via Bluetooth when in range
- To disconnect your cellular phone from XLink simply press the blue appropriate line button
- To re-connect your cellular phone to XLink on the same line, simply press the same button and the light will return to steady blue
- XLink ITC-BT is designed to work with your standard phone independently of your telephone service

XLink

Bluetooth Cellular Gateway

ITC-BT



QUICKSTART GUIDE